



**IMPORTANT**



## SCHOOL CARNIVAL PARKING ACCESS DURING CONSTRUCTION

**1**

There is limited parking at HSC due to construction

**2**

There is limited disability parking onsite

**3**

Parking onsite is limited to **AUTHORISED VEHICLES ONLY**  
Entry to the facility will be supervised by traffic control

**4**

**SPECTATORS ARE ASKED TO consider public transport and carpooling is encouraged**

**5**

Street Parking is available within short walk

**6**

Parking is available at Bill Bower Oval, Lake Rd Glendale

**7**

Stockland Shopping Centre parking is for shopping Centre patrons **ONLY**

Please support the shopping precinct whilst parking in the area

**8**

**NO Parking at Supercheap & Amart**  
This is Private Property & the area is under licence plate camera monitoring & parking fines issued



**IMPORTANT INFORMATION**

**HunterSports Centre**

## Hunter Sports Centre Car parking for athletics carnivals

Dear Sports Organiser,

Lake Macquarie City Council has given a green light to redeveloping the Hunter Sports Centre to deliver a state-of-the-art sports and wellbeing facility. With any new construction there is always growing pains and from the 12<sup>th</sup> of April construction will commence onsite. This will limit carparking.

Our new site will have more car parking when complete, but during construction, we will lose the majority of on-site parking.

Communication to stakeholders will be key when attending your carnival. The Centre would appreciate your support in communicating the information for staff, students, spectators, and transport organisations.

## Important Announcement Regarding Parking

There will be no parking available in the direct precinct of Hunter Sports Centre for your event. We strongly suggest that you plan your trip to Hunter Sports Centre well in advance.

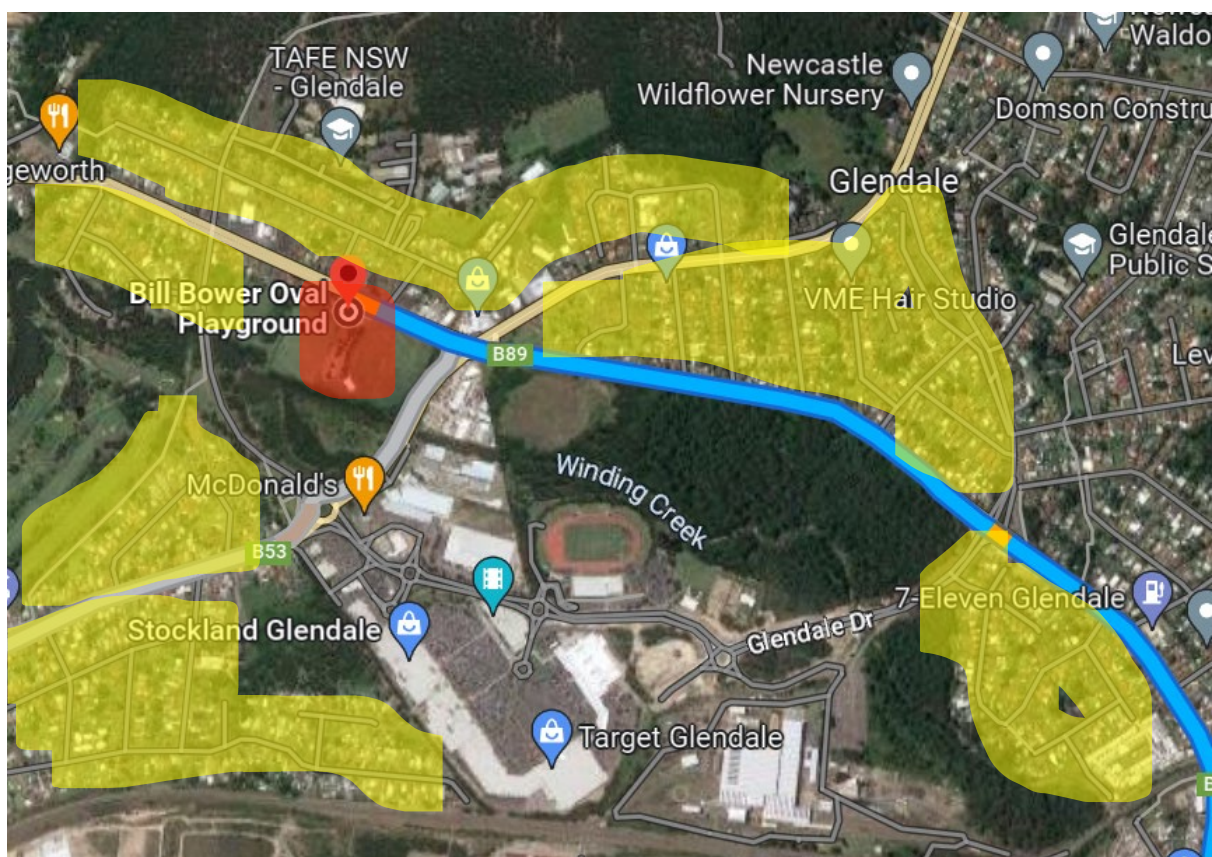
Where possible to limit the number of cars that are accessing the Centre we recommend:

- Bus drop off and pick up is the preferred transport option.
- Spectators should consider public transport.
- Carpooling is encouraged.
- There will be limited disability parking onsite.

### WHERE PARKING IS AVAILABLE

On street parking is available in streets adjacent to Stockland, Glendale (highlighted in yellow) requiring a short walk to Hunter Sports Centre.

There is public parking at Bill Bowers Oval, Lake Rd, Glendale (highlighted in red) between 9am and 3pm. Cars are NOT to park on ovals.



## **PARKING AT STOCKLAND SHOPPING CENTRE**

Stockland Glendale's carpark is for shopping centre patrons only. If you are intending to park at the shopping centre, please support the shopping precinct whilst in the area. Several shops have provided HSC guests with promotional vouchers. Please be considerate of Stockland shoppers and retailers and don't park in key shop front areas.

### **Where parking is not permitted**

The shopping precinct on the Hunter Sports Centre side of the road is privately owned and sign posted as NO HUNTER SPORTS CENTRE PARKING. This area is under licence plate camera monitoring and parking fines are issued by the owner. The facility also has boom gates that are locked outside of operating hours. Area highlighted orange.



## **VITAL INFORMATION FOR BUS TRANSPORT**

Please communicate with bus transport the designated drop zone within Hunter Sports Centre Facility . This is a drop off zone only, there is no parking directly onsite for busses to remain for the day.

## **ENTRY TO THE FACILITY**

Entry to the facility for Staff, Children and Spectators will be via the main foyer entry identified in green.



Green Line is the site construction fencing.

